

**indelB**



**AUTOCLIMA**

SYSTEMS,  
AIR CONDITIONING



AND  
REFRIGERATION  
SYSTEMS  
FOR VEHICLES

# Sales Conditions

## 1. GENERAL PROVISIONS

(a) The terms and conditions set out below (the "General Conditions of Sale") form an integral part of the contracts concluded between AUTOCLIMA and the Buyer for the supply of AUTOCLIMA products (the "Products");  
(b) The General Conditions of Sale apply to all transactions concluded between AUTOCLIMA and the Buyer without the need for an express reference to them or a specific agreement to this effect at the conclusion of each individual transaction. Any different condition or term applies only if confirmed in writing by AUTOCLIMA;  
(c) AUTOCLIMA reserves the right to modify, integrate or vary the General Conditions of Sale, attaching such variations to the offers or to any correspondence sent in writing to the Buyer. Such variations will be considered as accepted by the Buyer, after 30 (thirty) days from the date of receipt, without prejudice to the Buyer's right to declare in writing to AUTOCLIMA, within such term, any intention not to accept them.

## 2. ORDERS:

(a) All orders must be sent in writing (e-mail, post).  
(b) AUTOCLIMA's offers are always to be considered subject to final reconfirmation by AUTOCLIMA, even after acceptance by the Buyer, in particular with reference to quantities, prices and delivery terms.  
(c) Orders placed by the Buyer are not considered accepted until they have been confirmed in writing by AUTOCLIMA. In the event that AUTOCLIMA does not provide written confirmation of an order negotiated verbally, the issuing of the invoice by AUTOCLIMA or the execution of the order by AUTOCLIMA will be considered as confirmation.  
(d) Orders and/or changes to orders placed verbally or by telephone must be confirmed in writing by the Buyer. Otherwise AUTOCLIMA assumes no responsibility for any errors or possible misunderstandings.

## 3. PRICES:

unless otherwise agreed, orders will be processed according to the prices in force on their date of issue. The prices in the AUTOCLIMA price list are expressed in Euros (€) and are net of VAT and installation and replace and cancel all previous ones, together with any other previous communication in this regard. AUTOCLIMA reserves the right to change the prices in its price list without prior notice. Packaging is included in the price.

## 4. DELIVERY TERMS

(a) Unless otherwise agreed in writing, any delivery term indicated is not binding for AUTOCLIMA. Unless otherwise agreed between the parties, the indicative delivery term is that specified in the order confirmation;  
(b) AUTOCLIMA reserves the right to make partial deliveries, invoicing the Buyer for the products delivered;  
(c) Any liability for delivery resulting from force majeure or other unforeseeable events not attributable to AUTOCLIMA, including, without limitation, strikes, natural disasters, wars, lockouts, provisions of the public administration, subsequent blocks on export or import possibilities, in consideration of their duration and scope, release AUTOCLIMA from the obligation to respect any agreed delivery deadline;  
(d) AUTOCLIMA is not obliged to accept returns of products, unless expressly agreed in writing. Any costs incurred for this purpose are borne by the Buyer.

## 5. RETURNS:

all material is returned FCA Cambiano (TO). The goods travel at the buyer's risk. Faults, shortages or damages occurring during transport must be contested to the courier.

## 6. RETURNS OF GOODS:

returns of goods due to order cancellations or errors in the formulation of the order will be subject to prior written authorization by AUTOCLIMA. In any case, the material must be returned carriage paid and completely intact in all its parts. In addition, a flat rate reduction of 20% of the credit will be applied to cover the costs of management, control and restocking. In any case, returns of material are not permitted without written authorization by AUTOCLIMA SPA.

## 7. CONFIDENTIALITY:

the Buyer undertakes not to disclose or use, in ways other than those provided for by the contractual obligations, the commercial, corporate and technical data and information of which he may become aware during the execution of the contract itself.

## 8. PAYMENT:

Until full payment, the goods will remain the property of AUTOCLIMA SPA (without prejudice to the transfer of any risk relating to the same to the buyer). Any delay in payment will automatically generate the suspension of deliveries and any other service or provision in progress. Without prejudice to the legal actions that AUTOCLIMA intends to pursue, interest will also be applied equal to the discount rate published from time to time by the Bank of Italy, plus a penalty of 2% monthly, on the amount of the value due, calculated from the due date to the date of actual payment.

## 9. DUTY OF INSPECTION AND ACCEPTANCE OF THE PRODUCTS:

(a) Upon taking delivery of the Products, the Buyer must immediately:  
(i) check the quantities and packaging of the Products and record any objections in the delivery note as well as accepting the goods from the courier "with reservation";  
(ii) carry out a conformity check of the Products with respect to what is indicated in the order confirmation and record any discrepancy in the delivery note.  
(b) In the event of a complaint of defects, the Buyer must comply with the following procedures and terms:  
(i) the communication must be made within no more than 2 (two) working days from the date of receipt of the Products by the Buyer. In the event that the complaint relates to a defect that, despite the initial inspection, has remained hidden, the complaint must be made as soon as possible by the end of the working day on which the defect was discovered and, in any case, no later than 8 (eight) working days from the date of receipt of the Products;  
(ii) the detailed communication must be sent in writing to AUTOCLIMA within the terms indicated above. Any communication made by telephone will not be accepted;  
(iii) the communication must clearly specify the type and amount of the alleged defects, photographs proving the damage and shipping documents;  
(iv) the Buyer agrees to make the disputed Products available free of charge, upon simple request by AUTOCLIMA, for inspection; such inspection will be carried out by AUTOCLIMA or by an expert appointed by AUTOCLIMA.  
(c) No objection regarding the quantities, quality, type and packaging of the Products may be made except through communication on the delivery note, in accordance with the procedure indicated above.  
(d) Any Product for which no objection has been raised in accordance with the procedures and terms indicated above is considered approved and accepted by the Buyer.

## 10. PROCESSING OF PERSONAL DATA:

The Buyer's personal data will be processed in accordance with the provisions of the European and Italian legislation on the processing of personal data (EU Reg. 679/2016; Legislative Decree 196/2003 and subsequent amendments). AUTOCLIMA informs the Buyer that AUTOCLIMA SpA is the data controller and that the Buyer's personal data are collected and processed exclusively for the execution of this agreement and the obligations established by law, by a European regulation or by other applicable legislation. The Buyer declares to have received from AUTOCLIMA, before the collection of personal data by the same, the information referred to in art. 13 of EU Regulation 679/2016 intended for customers.

## 11. WARRANTY:

The warranty period for our products is 24 months from the date of installation on the vehicle, proven by the Warranty Certificate duly completed in all its parts and in any case for a maximum period of 27 months from the date of delivery of the same by Autoclima S.p.A. with a limit of 100,000 km travelled (or 1600 hours of operation). In the event that the Buyer is a private consumer, the warranty period will last 24 months from the date of installation on the vehicle, and in any case for a maximum period of 27 months from the date of delivery of the same by Autoclima S.p.A. Each A/C system component installed separately from other AUTOCLIMA products will not benefit from any Warranty. The air conditioners and refrigerators produced by AUTOCLIMA are exclusively intended for the conditioning of spaces occupied by people and the refrigeration of foodstuffs respectively. Any other use or application not expressly authorised in writing by AUTOCLIMA will void the warranty and release AUTOCLIMA from any liability for damage to people, animals or things. AUTOCLIMA will not be liable for defects in the products that are not covered by the legal guarantee of conformity, such as damage caused by normal wear and tear, accidents or unauthorised modifications. The Warranty is made operational only on interventions carried out by AUTOCLIMA Authorised Service Points. The validity of the Warranty ceases when the defect is attributable to incorrect installation, non-compliant use, lack of maintenance and for all transformations, modifications or interventions not authorised by AUTOCLIMA or not carried out by our Authorised Service Points. Consumable materials subject to natural wear and tear such as, for example, belts, filters, refrigerant, etc. are not covered by the warranty. For further details, refer to the "International Warranty Procedure".

## 12. USE OF THE BRAND:

the name, brand and logos representing AUTOCLIMA belong to the latter and cannot be used by the Buyer unless expressly authorised. The use of the trademark, logo and other distinctive signs of the company is permitted only with prior written authorization. The use of the trademark in such a way as to damage the reputation of the company or confuse consumers is prohibited. The trademark is protected by intellectual property laws. Any unauthorized use will be prosecuted.

## 13. APPLICABLE LAW AND JURISDICTION:

These general conditions of sale are governed by Italian law. The court of Turin has jurisdiction over any dispute.

## 14. FINAL PROVISIONS:

(a) The invalidity in whole or in part of individual provisions of these General Conditions of Sale does not affect the validity of the remaining provisions.  
(b) These General Conditions of Sale are drawn up in two languages: Italian and English. In the event of doubts of interpretation, the Italian version will prevail. Pursuant to and for the purposes of Articles 1341 and 1342 of the Italian Civil Code, the Buyer specifically approves the provisions referred to below: Art. 1 (b) - Applicability of the general conditions of sale to all contracts; Art. 3 - Prices and payment terms; Art. 4 - Delivery terms; Art. 5 - Returns; Art. 8 - Payment; Art. 9 - Duty to inspect and accept products; Art. 11 - Warranty terms; Art. 12 - Use of the trademark; Art. 13 - Applicable law and competent court; Art. 14 Final provisions.

# Index

## Air Conditioning

---

Roof Top Units

pag. 5

---

# AIR CONDITIONING

AIR CONDITIONING

AIR CONDITIONING

AIR CONDITIONING

AIR CONDITIONING

AIR CONDITIONING

AIR CONDITIONING

AIR CONDITIONING

AIR CONDITIONING

CONDIZIONAMENTO



# ROOF TOP UNITS

ROOF TOP UNITS

ROOF TOP UNITS

ROOF TOP UNITS

ROOF TOP UNITS

ROOF TOP UNITS

ROOF TOP UNITS

ROOF TOP UNITS

ROOF TOP UNITS

ROOF TOP UNITS

# Controls

## AC MANUAL CONTROL KIT (3 SPEEDS)



Cod.	Voltage
12 V - 24 V 80821134	12 V - 24 V

NOTE:

## AC MANUAL CONTROL KIT (3 SPEEDS)



Cod.	Voltage
12 V - 24 V 80821239	12 V - 24 V

NOTE:

**Easy Air**

**AIR DIFFUSER DM. 77.5 - BLACK**



Cod.	
20299040	

NOTE:

---

**CENTRAL AIR DIFFUSER KIT**



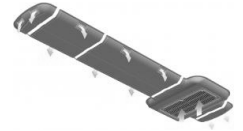
Cod.	Height	
80821484	71 mm	

NOTE:

---

## Roof Top Units

### CENTRAL AIR DUCT KIT - L 1990 MM



Cod.	Length	Height	
20297452	1990 mm	71 mm	

NOTE:

### CENTRAL AIR DUCT KIT - L 2490 MM

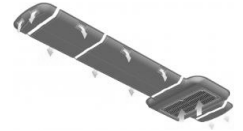


Cod.	Length	Height	
20297453	2490 mm	71 mm	

NOTE:

## Roof Top Units

### CENTRAL AIR DUCT KIT - L 3490 MM



Cod.	Length	Height	
20297455	3490 mm	71 mm	

NOTE:

### CENTRAL AIR DUCT KIT RT 110 - L 2990 MM

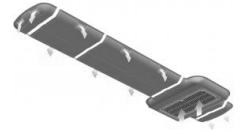


Cod.	Length	Height	
20297454	2990 mm	71 mm	

NOTE:

# Roof Top Units

## CENTRAL DUCT KIT



Cod.	Length	Height
20297468	1490 mm	71 mm

NOTE:

## COMPLETE AIR FILTER KIT FOR RT 145 - RT 160



Cod.
80821276

NOTE:

## Roof Top Units

### COMPLETE AIR FILTER KIT FOR RT 201 - 478X848



Cod.	
80821396	

NOTE:

---

### COMPLETE AIR FILTER KIT RT 120



Cod.	
80821480	

NOTE:

---

# Modula

**CONTROL WIRING EXTENSION KIT FOR RT 40 / RT 60**



Cod.	
80821104	

NOTE:

---

**COVER KIT FOR E60 MISTRAL ATTIC WITH BRACKETS**



Cod.	
69691007	

NOTE:

---

## Roof Top Units

DIGITAL CONTROL AND WIRING KIT FOR RT 110 - 120



Cod.	Voltage
12 V - 24 V V <b>80821378</b>	12 V - 24 V

NOTE:

DIGITAL CONTROL AND WIRING KIT FOR RT 70-85



Cod.	Voltage
24 V <b>80821823</b>	24 V

NOTE:

## Roof Top Units

### DIGITAL CONTROL AND WIRING KIT FOR RT 70-85



	Cod.	Voltage	
12 V	80821822	12 V	

NOTE:

### DIGITAL CONTROL KIT AND UNIVERSAL WIRING RT 201



	Cod.	Voltage	
24 V	80821304	24 V	

NOTE:

## Roof Top Units

### DIGITAL CONTROL KIT AND WIRING FOR RT 160 AT 12V



	Cod.	Voltage	
12 V	80821275	12 V	

NOTE:

### DIGITAL CONTROL UNIT KIT FOR E75 / E85 / E90



	Cod.	Voltage	
12 V	80821103	12 V	
24 V	80821210	24 V	

NOTE:

# Modula

## DIGITAL CONTROL UNIT KIT FOR RT 40



	Cod.	Voltage	Controls
12 V	80821105.1	12 V	Digital
24 V	80821106.1	24 V	Digital

NOTE:

## DIGITAL CONTROLS KIT AND WIRING FOR RT 145



	Cod.	Voltage
12 V - 24 V	80821171	12 V - 24 V

NOTE:

# Controls

**DTM DIGITAL CONTROL KIT FOR AUTOCLIMA 12-24V ROOF GROUPS**



Cod.	Voltage
12 V - 24 V V <b>20235268</b>	12 V - 24 V

NOTE:

**EASY AIR - AIR DUCTING (TO BE DEFINED ON REQUEST)**



Cod.
<b>20297999</b>

NOTE:

# Controls

## ETM DIGITAL CONTROL KIT FOR ROOF GROUPS



Cod.	
20235225	

NOTE:

---

## ETM PLUS DIGITAL CONTROL KIT (HEATER MANAGEMENT) FOR ROOF GROUPS



Cod.	
20235222	

NOTE:

---

## Roof Top Units

FRIGOCLIC STANDARD ASSEMBLY SET FOR RT70-RT85 - RTH70 - RTH85



Cod.	Voltage	
12 V - 24 V V <b>60600898</b>	12 V - 24 V	

NOTE:

FRONT FRAME KIT FOR E60 MISTRAL WITH 4 MOUTHS



Cod.	
<b>20270204</b>	

NOTE:

# Universal Evaporators

## FRONT KIT FOR E75 / E90



Cod.	
202901359	

NOTE:

## H40 - VENTILATED HEATER 5 BLOWERS



	Cod.	Electric Absorption	Voltage	Heating capacity	Air flow
12 V	15151064	1,5A 12VDC	12 V	4,0 kW	250 m3/h
24 V	15151065	0,9 A@24VDC	24 V	4,0 kW	250 m3/h

NOTE:

## Roof Top Units

**HEATING ACCESSORIES KIT RTH 120 - 12V / RTH 145 - 12V**



Cod.
80821358.1

NOTE:

---

**HEATING OPTION KIT - FOR RT 110 - RT 120**



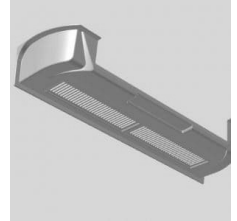
Cod.	Voltage
12 V 80821135.1	12 V
24 V 80821426	24 V

NOTE:

---

**UNIVERSAL ACCESSORIES**

**KIT ROOF COVERING X E75 - EH75 - E90**



Cod.
202901636.1

NOTE:

**LED LIGHT DIFFUSER 12V DM. 77.5 - BLACK**



	Cod.	Voltage
12 V	20299042	12 V

NOTE:

# Controls

## MANUAL CONTROL KIT - HOT FUNCTION (2 POSITIONS)



Cod.	Voltage	
12 V - 24 V V <b>80821169</b>	12 V - 24 V	

NOTE:

## MANUAL CONTROL KIT - HOT FUNCTION (3 POSITIONS)



Cod.	Voltage	
12 V - 24 V V <b>80821170</b>	12 V - 24 V	

NOTE:

# Controls

## MTM 12V MANUAL CONTROL PANEL



	Cod.	Voltage
12 V	20235265	12 V

NOTE:

## PIPE OUTLET CLOSURE KIT FOR RT 145



Cod.
80821187

NOTE:

# Roof Top Units

## PIPE OUTLET CLOSURE KIT FOR RT 201



Cod.	
	<b>80821323</b>

NOTE:

## REMOTE AIR DISTRIBUTION ACCESSORY KIT FOR E60 MISTRAL



Cod.	
	<b>69691013</b>

NOTE:



**REMOTE AIR DISTRIBUTION ACCESSORY KIT FOR E60 MISTRAL**



Cod.	
69691014	

NOTE:

**ROOF TOP UNITS - RTEH 18 - 230V**



Cod.	A/C Type	Electric Absorption	Voltage	Weigh	Height	Coolant	Controls	Installation	Ventilation speed	Remote Controller	220V cooling capacity
230V a.c. 50Hz 10101205	Roof top unit 230 V a.c. 50 Hz	LRA (corrente di spunto) 14A, MRA (maximum absorbed current at steady state) 3,7A	230V a.c. 50Hz	33,2Kg	270 mm	R32	Remote digital controls	RT (Roof Top)	3 + AUTO	YES	1600 W

NOTE:

## Roof Top Units



### ROOF TOP UNITS - RTEH 22 - 230V

Cod.	A/C Type	Electric Absorption	Voltage	Weigh	Height	Coolant	Controls	Installation	Ventilation speed	220V cooling capacity	Remote Controller
230V a.c. 50Hz <b>10101206</b>	Roof top unit 230 V a.c. 50 Hz	LRA (inrush current) 18A, MRA (maximum absorbed current at steady state) 5A	230V a.c. 50Hz	34,5	270 mm	R32	Remote digital controls	RT (Roof Top)	3 + AUTO	2100 W	YES

NOTE:



### ROOF TOP UNITS - RTEH 28 - 230V

Cod.	A/C Type	Electric Absorption	Voltage	Weigh	Height	Coolant	Controls	Installation	Ventilation speed	220V cooling capacity	Remote Controller
230V a.c. 50Hz —	Roof top unit 230 V a.c. 50 Hz	LRA (inrush current) 21A, MRA (maximum absorbed current at steady state) 6A	230V a.c. 50Hz	35,8Kg	270 mm	R32	Remote digital controls	RT (Roof Top)	3 + AUTO	2700 W	YES

NOTE:

## Roof Top Units

### RT 110 - 12V



Cod.	Electric Absorption	Voltage	Height	Coolant	Cooling capacity	Weigh	Ventilation speed	Air flow
12 V —	40 A	12 V	181 mm	R134a	11 kW	34kg	3	1500 m3/h
24 V —	20 A	24 V	181 mm	R134a	11 kW	34kg	3	1500 m3/h

NOTE:

### RT 120



Cod.	Voltage	Weigh	Coolant	Cooling capacity	Ventilation speed	Air flow
12 V —	12 V	45 Kg	R134a	12,5 kW	3	2000 m3/h

NOTE:

## Roof Top Units

### RT 145 RESTYLING



Cod.	Electric Absorption	Voltage	Weigh	Coolant	Cooling capacity	Ventilation speed	Air flow
12 V —	72 A	12 V	52 Kg	R134a	14,5 kW	3	2000 m3/h
24 V —	36 A	24 V	52 Kg	R134a	14,5 kW	3	2000 m3/h

NOTE:

### RT 160 RESTYLING - 12V



Cod.	Electric Absorption	Voltage	Weigh	Coolant	Cooling capacity	Ventilation speed	Air flow
12 V —	106 A	12 V	5,5 Kg	R134a	16 kW	3	2800 m3/h
24 V —	53 A	24 V	55 Kg	R134a	16 kW	3	2800 m3/h

NOTE:

## Roof Top Units

### RT 201



	Cod.	Electric Absorption	Voltage	Weigh	Coolant	Cooling capacity	Evaporator air flow	Ventilation speed
24 V	10101096	56 A	24 V	98 Kg	R134a	20 kW	4200 mc/h	3

NOTE:

### RT 201 - DOUBLE CIRCUIT



	Cod.	Electric Absorption	Voltage	Weigh	Coolant	Cooling capacity	Evaporator air flow	Ventilation speed
24 V	10101102	55 A	24 V	98 Kg	R134a	20 kW	4200 mc/h	3

NOTE:

## Roof Top Units

### RT 70 - 12V



Cod.	Electric Absorption	Voltage	Weigh	Coolant	Cooling capacity	Controls	Air flow
12 V —	24 A	12 V	20 Kg	R134a	7,0 kW	Manuals	750 m3/h
24 V —	12 A	24 V	20 Kg	R134a	7,0 kW	Manuals	750 m3/h

NOTE:

### RT 85 - 12V



Cod.	Electric Absorption	Voltage	Weigh	Coolant	Cooling capacity	Controls	Air flow
12 V —	32 A	12 V	21,5 Kg	R134a	9,0 kW	Manuals	1010 m3/h
24 V <b>10101154</b>	16 A	24 V	21,5 Kg	R134a	9,0 kW	Manuals	1010 m3/h

NOTE:

## Roof Top Units

### RT40



	Cod.	Electric Absorption	Voltage	Weigh	Coolant	Cooling capacity	Controls	Air flow
12 V	10101071	20 A	12 V	30 Kg	R134a	4,0 kW	Manuals	600 m3/h
24 V	10101072	10 A	24 V	30 Kg	R134a	4,0 kW	Manuals	600 m3/h

NOTE:

### RTH 110 - 12V - ONLY ON REQUEST



	Cod.	Electric Absorption	Voltage	Height	Coolant	Cooling capacity	Ventilation speed	Heating capacity	Air flow	Weigh
12 V	—	40 A	12 V	181 mm	R134a	11 kW	3	11,4 kW	1500 m3/h	36kg

NOTE:

## Roof Top Units

### RTH 120



Cod.	Electric Absorption	Voltage	Weigh	Coolant	Cooling capacity	Ventilation speed	Heating capacity	Air flow
12 V	53 A	12 V	45 Kg	R134a	11,4 kW	3	12,3 kW	2000 m3/h

NOTE:

### RTH 145 RESTYLING



Cod.	Electric Absorption	Voltage	Weigh	Coolant	Cooling capacity	Ventilation speed	Heating capacity	Air flow
12 V	72 A	12 V	52 Kg	R134a	14,5 kW	3	12 kW	2000 m3/h

NOTE:

## Roof Top Units

### RTH 201



	Cod.	Electric Absorption	Voltage	Weigh	Coolant	Cooling capacity	Evaporator air flow	Ventilation speed	Heating capacity
24 V	10101101	55 A	24 V	98 Kg	R134a	20 kW	4200 mc/h	3	24 kW

NOTE:

### RTH 40 - ONLY ON DEMAND



	Cod.	Electric Absorption	Voltage	Weigh	Coolant	Cooling capacity	Heating capacity	Air flow
12 V	10101073	20 A	12 V	30 Kg	R134a	4,0 kW	4,5 kW	550 m3/h
24 V	10101074	10 A	24 V	30 Kg	R134a	4,0 kW	4,5 kW	550 m3/h

NOTE:

## Roof Top Units

### RTH 70



Cod.	Electric Absorption	Voltage	Weigh	Coolant	Cooling capacity	Controls	Heating capacity	Air flow
12 V —	24 A	12 V	21 Kg	R134a	7,0 kW	Manuals	7,0 kW	750 m3/h
24 V —	12 A	24 V	21 Kg	R134a	7,0 kW	Manuals	7,0 kW	750 m3/h

NOTE:

### RTH 85



Cod.	Electric Absorption	Voltage	Weigh	Coolant	Cooling capacity	Controls	Heating capacity	Air flow
12 V —	32 A	12 V	22,5 Kg	R134a	9,0 kW	Manuals	8 kW	1010 m3/h
24 V —	16 A	24 V	22,5 Kg	R134a	9,0 kW	Manuals	8 kW	1010 m3/h

NOTE:

## Roof Top Units

### RTH70/RTH85 HEATING OPTION KIT



	Cod.	Voltage	
12 V	80821540	12 V	
24 V	80821541	24 V	

NOTE:

### SANICLIMA W200



	Cod.	Electric Absorption	Voltage	Weigh	Air flow	
12 V	20270324	2,5A	12 V	2,6 Kg	200 m3/h	
24 V	20270325	1,2A	24 V	2,6 Kg	200 m3/h	

NOTE:

## Air Sanitization Systems

### SANICLIMA W200



	Cod.	Electric Absorption	Voltage	Weigh	Air flow
12 V	20270324.1	2,5A	12 V	2,6 Kg	200 m3/h
24 V	20270325.1	1,2A	24 V	2,6 Kg	200 m3/h

NOTE:

### STANDARD ASSEMBLY KIT WITH FRIGOCLIK AND REFRIMASTER FOR EQUIPMENT WITH EVAPORATORS MAX 6 KW



Cod.
60600518

NOTE:

# UNIVERSAL ACCESSORIES

**STANDARD SYSTEM EXTENSION ASSEMBLY KIT WITH FRIGOCLIK L.11 M**



Cod.	
	<b>68685799.1</b>

NOTE:

---

**STANDARD SYSTEM EXTENSION MOUNTING KIT WITH REFRIGERATOR L.7 M**



Cod.	
	<b>68685799</b>

NOTE:

---

# Controls



## TEMPERATURE REGULATOR

Cod.	Voltage
12 V - 24 V 20235104R	12 V - 24 V

NOTE:



## TROPICO-ROOF AIR CONDITIONER

Cod.	Product	Voltage	Cooling capacity	Heating capacity	Electric Absorption	Weigh	Air flow
12V A0CF003ES	SEA	12V	8.3Kw	5.6Kw	38.8A	29kg	1080 m3/h
24V A0CF004ES	SEA	24V	8.3Kw	5.6Kw	18.5A	29kg	1100.m3/h

NOTE:

# UNIVERSAL ACCESSORIES

## UNIVERSAL 12-24V ETC DIGITAL CONTROL KIT WITH WIRING HARNESS



Cod.	Voltage
12 V - 24 V 80821332	12 V - 24 V

NOTE:

## UNIVERSAL DIGITAL CONTROL KIT 12-24V DTM



Cod.	Voltage
12 V - 24 V 20235267	12 V - 24 V

NOTE:

# Controls

## UNIVERSAL DIGITAL CONTROL KIT 12-24V ETC-S



Cod.	Voltage
12 V - 24 V 20235314	12 V - 24 V

NOTE:

## UNIVERSAL DIGITAL CONTROLS 12-24V ETC



Cod.	Voltage
12 V - 24 V 20235099	12 V - 24 V

NOTE:

# UNIVERSAL ACCESSORIES

UNIVERSAL HEATING ACCESSORY KIT 12V



Cod.	
80821113.1	

NOTE:

---

UNIVERSAL HEATING ACCESSORY KIT 24V



Cod.	
80821280.1	

NOTE:

---

## Roof Top Units

UNIVERSAL MOUNTING SET FOR RT 110-120-145-160 / RTH 110-120-145-160



Cod.	
60600749	

NOTE:

---

UNIVERSAL MOUNTING SET FOR RT 201 (FRIDGE-CLIC FITTINGS) AND RECOVERABLE FITTINGS



Cod.	
60600632	

NOTE:

---

## Roof Top Units

UNIVERSAL MOUNTING SET FOR RT 40 / RTH 40  
WITH REFRIMASTER PIPES



Cod.

60600698

NOTE:

# THE REFRIGERATION BY AUTOCLIMA

## HEADQUARTERS AND SUBSIDIARIES

**Sede di Cambiano**  
Via Cavalieri di Vittorio  
Veneto, 15  
10020 Cambiano (TO)  
Tel. +39 011 9443210  
Fax +39 011 9443230  
sales@autoclima.com

**Indel B Germany GmbH**  
Robert Bosch Str. 3  
64572 Büttelborn  
Germany  
Tel: +49 (6152) 187799 - 0  
Fax: +49 (6152) 187799 - 9  
info@autoclima.de

**Autoclima Iberica**  
Oficinas: C/ Vapor, 1  
Almacén: C/ Indústria,11  
08760 Martorell  
Barcelona (Spain)  
Tel: +34 931 220 235  
comercial@autoclima.com

**Autoclima Polska**  
Szkolna 11  
62-026 Gadki  
Poland  
Tel: +49 600751354  
info@autoclima.pl

**Autoclima Russia**  
143441, Moscow region,  
Krasnogorsky district,  
BP Greenwood,  
bld 1, office 212  
Tel +7 (495) 150-75-90  
info@indelb-rus.ru

**Indel B France**  
ZA des Perriers  
78500 Sartrouville - France  
T. +33 (1) 61.04.41.41  
Fax +33 (1) 39.57.44.21  
esc@esc-clim.com

**SEA S.R.L.**  
Via L. Lama, 8 - 48026  
Russi RA (Italia)  
Tel. +39 0544 582436  
+39 0544 583794  
info@sea-italia.com

## DEPOSITI ITALIA

**Deposito Roma**  
Via Lucio Mariani, 59  
00178 Roma - Italy  
Tel. +39 06 32091591  
Fax +39 06 32091592  
autoclimaroma@autoclima.com

**Deposito Bologna**  
Via della Fisica, 5 - loc. Cicogna  
40068 San Lazzaro di Savena (BO)  
Tel. +39 051 6256786  
Fax +39 051 6250676  
autoclimabologna@autoclima.com

**Deposito Firenze**  
Via Boccaccio, 8  
50013 Campi Bisenzio (FI)  
Tel: +39 055 0540846  
Fax: +39 055 0540847  
autoclimafirenze@autoclima.com

**Deposito Alba**  
Viale Artigianato 30C  
12051 Alba (CN)  
Tel. +39 051 6256786  
Fax. +39 051 6250676  
alba@autoclima.com

**Deposito Rende**  
Contrada Piano di Maio  
87036 Rende (CS)  
Tel. +39 0984 447251

**Deposito Pero**  
Via Buonarroti 2/B  
20016 Pero (MI)  
Tel: +39 0362 1860178  
pero@autoclima.com

**Deposito Padova**  
Via dell'Industria, 70  
35129 Padova  
Tel: +39 049 7160243  
Fax: +39 049 7160244  
padova@autoclima.com

**Deposito Catania**  
Via Gioacchino Russo, 15 / A  
95100 Catania  
Tel: +39 095 3800043  
Fax: +39 095 3800044  
catania@autoclima.com

**Deposito Bari**  
S.P. 231 KM1,110 70026  
Modugno  
Tel: +39 080/5354165  
Fax: +39 3488809823  
bari@autoclima.com

